

live.better

Separating waste correctly

Be kind to the environment & your wallet!



Yellow bin

Packaging with the green dot



- **Plastics** (e.g. yoghurt pots, foils)
- **Foamed packaging** made from polystyrene (e.g. bowls for packaged fruit or vegetables)
- **Blown containers** (e.g. fabric softener bottles)
- **Composite materials/drinks cartons** (a mixture of the materials paper, plastics and aluminium, e.g. for apple juice or UHT milk)
- **Aluminium** (screw caps from jars, cheese packaging made from foil or yoghurt pot lids)
- **Tin** (food cans, aerosol cans, the latter without poisonous contents)



Please empty the waste **directly** into the bin **without bin liners!** This will save you a lot of space in the bin and a lot of money on your waste bill!



DO NOT put the following in the **yellow bag** or the **yellow bin**:



- **Plastics that do not serve as packaging** (coat hangers, toys, foam goods such as cushions, paper tissues, kitchen towels, nappies, music/video cassettes)
- **Organic waste**
- **Glass**, even if it carries the green dot, belongs in the bottle bank
- **Paper and cardboard packaging**, even if they are marked with the green dot, still belong in the waste paper container.
- **Cans and aerosol cans** with toxic contents, such as varnish and paint (they must be treated as hazardous waste)

Blue paper bin

(Almost) everything made of paper & cardboard

- **Unsoiled paper and cardboard packaging** (e.g. paper bags, cheese boxes, cigarette boxes (without cling film), soap boxes, washing powder boxes without plastic handles, etc.)
- **Newspapers, glossy magazines, journals**
- **Letters, advertising brochures, circulars**
- **Catalogues** (if they are not taken back)
- **Books, diaries** (without plastic binding)
- **Waste paper** (writing paper, forms)



FIRST BREAK DOWN INTO SMALLER PIECES, THEN PUT IT IN!



DO NOT put the following in the **blue paper bin**:



- **Beverage cartons** (milk and juice cartons and other containers coated with aluminium and plastic)
- **Carbon paper**
- **Wallpaper scraps**
- **Disposable nappies and sanitary towels**
- **Telephone books** (these are taken back by the postal service)
- **Used tissues and serviettes**

Green organic waste bin

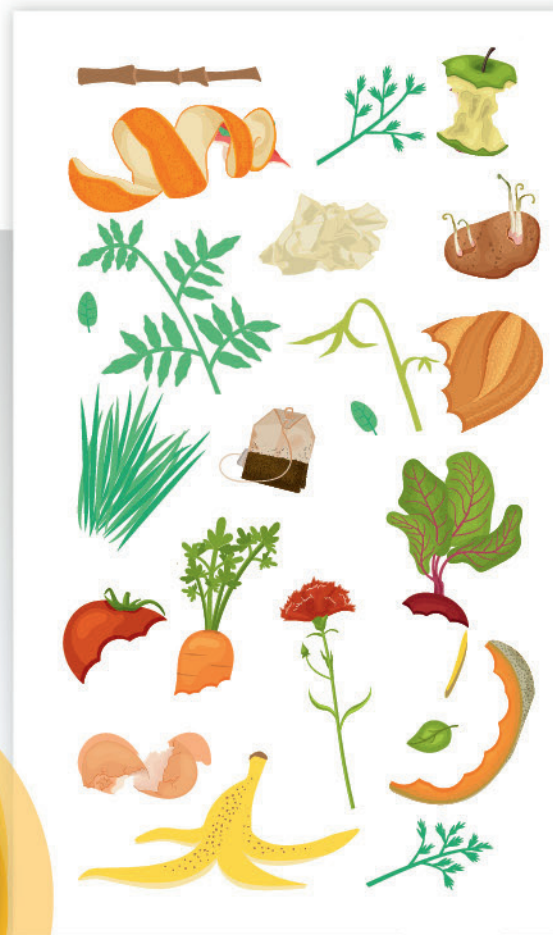
And the environment will thank you

- **Kitchen waste** (vegetable and fruit waste – including tropical fruits and eggshells, coffee and tea filters, tea bags with contents, vegetable food waste)
- **Soiled paper, paper bags, wrapping paper, kitchen towels, paper tissues**
- **Small amounts of plant waste** from the flat or from the balcony



The city provides **paper organic waste bags** for collecting the organic waste in the house and storing it in the organic waste bin.

The bags are available **free of charge** at retail outlets.



DO NOT put the following in the **green organic bin**:

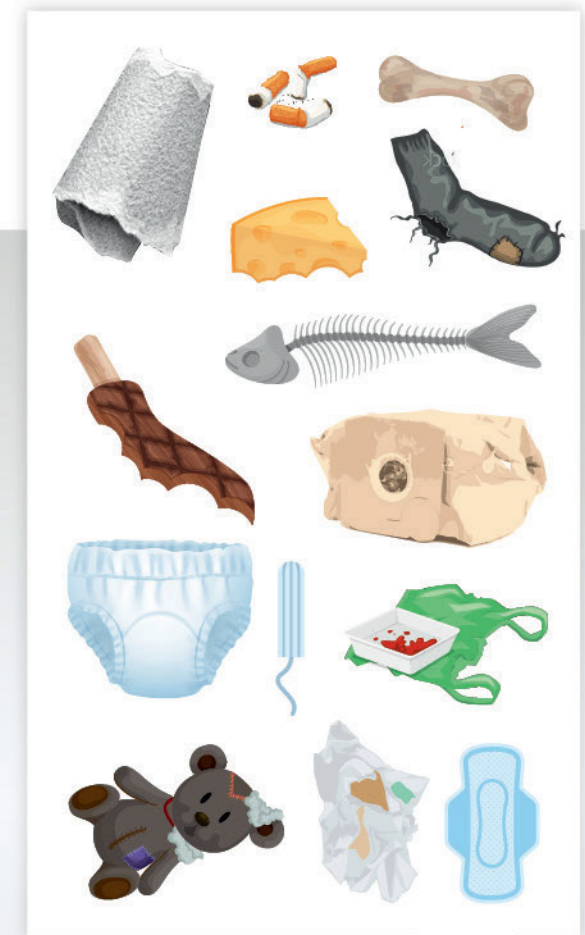


- **Sausage, cheese, meat, fish and bones** (of fish and meat)
- **Cigarette butts and boxes**
- **Vacuum cleaner bags**
- **Nappies**
- **Wallpaper scraps**
- **Ashes, soot or oil black**
- **Leather and textiles**
- **Animal excrement**
- **Construction timber** = recycling yard

Black residual waste bin

Separate correctly and save a lot of money.

- Waste that **cannot be placed in the yellow bag or bin, the blue paper bin or the green organic waste bin** belongs in the **black residual waste bin**. If the bin is repeatedly filled incorrectly, additional bins must be purchased for a fee.
- In addition, you can **purchase municipal waste sacks in shops or from the City of Nuremberg**, which may be placed next to the residual waste bin. These must be tightly closed; otherwise they attract rats and vermin.
- Apart from the municipal waste sacks, **no other boxes, plastic bags or similar placed next to the residual waste bin will be taken away** by the waste collectors.



Keep access **clear** for refuse collection to avoid **additional costs**.

Fees (as of May 2021)

for residual waste containers of the City of Nuremberg

Bins	Annual charge
60l	€ 140.40
120l	€ 280.80
240l	€ 561.60
770l	€ 1,801.80
1100l	€ 2,574.00

for residual waste sacks of the City of Nuremberg:

Waste sack	1 pc.
60l	€ 4.25

The volume of the bins is calculated on the basis of the number of persons in the housing complex.

Fees: <https://www.nuernberg.de/internet/abfallwirtschaft/gebuehren.html#5>



Bottle bank

Bottles & jars

- **Empty bottles and jars** (including those with the green dot) for which no deposit has been paid.
- **Jam jars, juice bottles, bottles for cooking oil, vinegar, sauces**
- **Disposable wine bottles** etc.

REMOVE ALL SCREW CAPS BEFOREHAND AND THROW THEM IN THE RESIDUAL WASTE/YELLOW BIN!

If the **bottle banks** are **over-filled** or there is a lot of litter pollution at the site, you can contact Friedrich Hofmann Betriebsgesellschaft mbH & Co.KG directly.
Tel.: 0800 / 1 00 43 37 (free of charge).

DO NOT put the following in the **bottle bank**:



- **Ceramic shards** (e.g. of tiles or porcelain)
- **Porcelain shards and fire-proof glass** (Jena glass, oven door glass etc.)
- **Mirrors and wired glass** = recycling yard
- **Sheet glass** (e.g. window glass) **and laminated glass** (car windscreens) = recycling yard
- **Screw caps of jars and crown caps**
- **Light bulbs and fluorescent tubes** = recycling yard

Hazardous waste

Hazardous waste poses a great danger to humans, animals and the environment.

Hazardous waste is toxic, flammable and can cause undesirable chemical reactions. It must therefore be disposed of properly at the toxic waste mobile of the City of Nuremberg.

A list of all hazardous waste as well as the dates and locations of the toxic waste mobile can be found here.

Tel.: 0911 / 2 31 40 97



Hazardous waste that is disposed of differently:

- **Waste oil from motor vehicles** = return in the store
- **Batteries with recycling symbol** = return in the store
- **Vegetable fat and oils** = recycling yard
- **Medications** = pharmacy or toxic waste mobile
- **Asbestos** = landfill site
- **Aerosol cans for setting lotions, cream etc.** = yellow bag
- **Fire extinguishers** = specialist companies
- **Toner containers from photocopiers and printers** = residual waste
- **Electrical equipment** = recycling yard
- **Emulsion paint** = residual waste
- **Light bulbs** = residual waste
- **Energy-saving lamps** = recycling yard

Electrical waste & bulky waste

You can find an overview of the locations here



Important: tenants must apply for a bulky waste appointment on their own responsibility or drive their bulky waste to the recycling yard themselves and dispose of it properly. It is forbidden to leave bulky waste at the refuse site. Any costs for special collection will be borne by the entire house community if the polluter is unknown. Therefore, if you can provide information about the person responsible for illegally deposited bulky waste, please report this in writing to your Customer Centre.

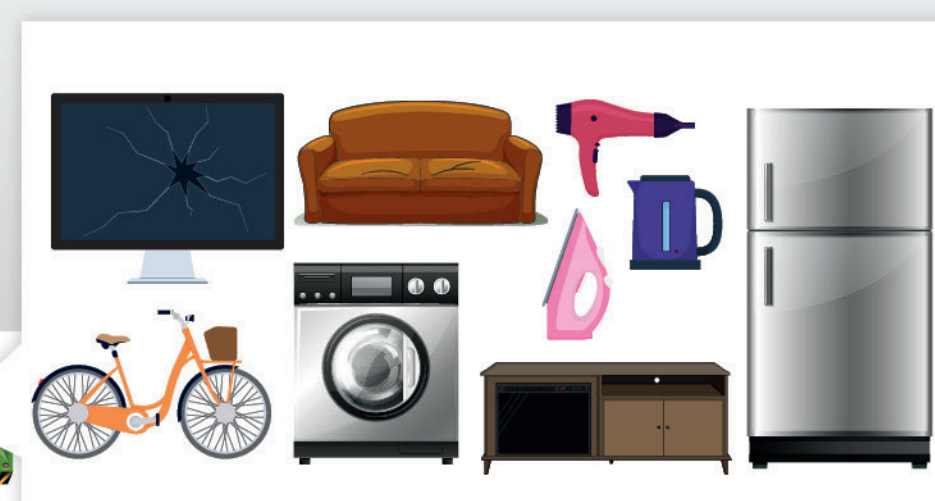
Small electrical items (e.g. kettles, irons, etc.) can also be disposed of by the tenant in **e-bins** (e.g. in our Customer Centres).

- **Bed frames, sofas, mattresses**
- **Bicycles, prams**
- **Chests, suitcases**
- **Chests of drawers, arm chairs, shelves, cupboards, chairs, tables**
- **Consumer electronic devices**
- **Small office and household appliances**
- **"White goods"** e.g. fridges, tumble dryers

The following does **NOT** belong in the **bulky waste**:



- **Hazardous waste** = toxic waste mobile
- **Construction waste** = small quantities to the recycling yard
- **Old car tyres** = back to the dealer or the recycling yard
- **Waste paper and glass**
- **Bags, boxes, tools and cardboard boxes containing small rubbish**



Each household can have bulky waste collected free of charge once a year.

You can apply for bulky waste disposal **online** here:

Or by telephone at:
0911 / 2 31 25 93



The **recycling yards** offer another option for a clear out.

CENTRE	Am Pferdemarkt 23	Tel.: 0911 / 8 01 38 04
NORTH	Haerberleinstr. 7	Tel.: 0911 / 36 76 05
EAST	Kallmünzer Str. 12	Tel.: 0911 / 40 31 20
FISCHBACH	Dickensstr. 3	Tel.: 0911 / 83 21 38
KATZWANG	Strawinskystr. 39	Tel.: 09122 / 7 31 73
BOXDORF	Würzburger Str. 17	Tel.: 0911 / 3 07 15 75

More beautiful # **together...**

